

TAKE OFF SIDE

DESCRIPTION

Side Take Offs are manufactured using either standard gauge or 30 gauge galvanized steel and are available in 90 degree and 45 degree configurations.

APPLICATIONS

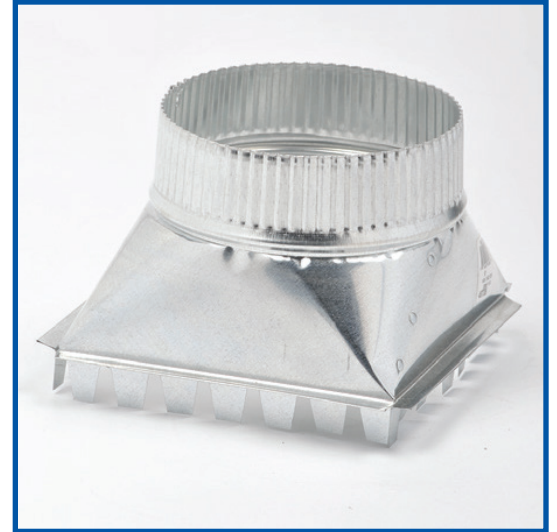
Take Offs are cut into the plenum or rectangular duct and are used to begin pipe truckline or branchline runs.

FEATURES & BENEFITS

- Riveted construction
- Crimped
- Fishlock
- Heavy 26 gauge collar for added rigidity for 9" + diameters
- Union Made

90 DEGREE

Part Number	Description	UOM	Ctn.Qty
4ST04	4" STO 90DEG ANGLE	EA	54
4ST05	5" STO 90DEG ANGLE	EA	66
4ST06	6" STO 90DEG ANGLE	EA	40
4ST07	7" STO 90DEG ANGLE	EA	20
4ST08	8" STO 90DEG ANGLE	EA	32
4ST09	(M) 9" STO 90DEG ANGLE	EA	12
4ST10	10" STO 90DEG ANGLE	EA	18
4ST12	12" STO 90DEG ANGLE	EA	10
4ST14	(M) 14" STO 90DEG ANGLE	EA	3



HEAD OFFICE

2259 Markham Road, Scarborough
Ontario, Canada M1B 2W3
TEL: 416.449.7275 FAX: 416.449.2614