

SIDE ANGLE ELBOW 90 DEGREE

DESCRIPTION

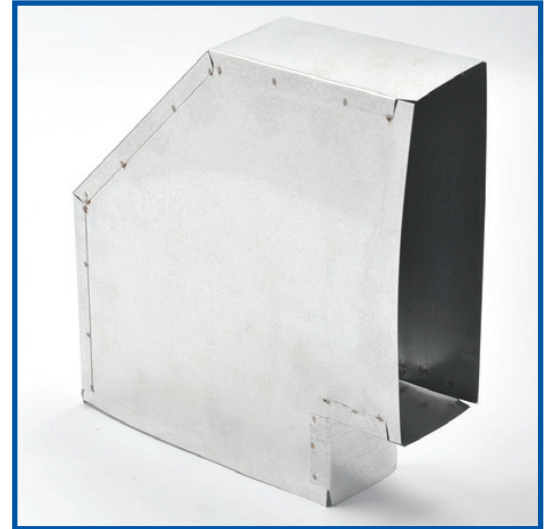
Side angle elbows are available in 45 degree and 90 degree configurations. Made from 28 gauge galvanized steel and available assembled or unassembled.

APPLICATIONS

This product is designed for indoor use as a connector for matching gauge duct.

FEATURES AND BENEFITS

- Handcrafted
- Cross broken for stability
- Pittsburgh seam
- S and D cleat ready



| Part Number | Description | UOM | Ctn.Qty |
|-------------|----------------------------|-----|---------|
| SA9008828 | 8"x 8" SIDE ANG. EL 90DEG | EA | 1 |
| SA9010828 | 10"x 8" SIDE ANG. EL 90DEG | EA | 1 |
| SA9012828 | 12"x 8" SIDE ANG. EL 90DEG | EA | 1 |
| SA9014828 | 14"x 8" SIDE ANG. EL 90DEG | EA | 1 |
| SA9016828 | 16"x 8" SIDE ANG. EL 90DEG | EA | 1 |
| SA9018828 | 18"x 8" SIDE ANG. EL 90DEG | EA | 1 |
| SA9020828 | 20"x 8" SIDE ANG. EL 90DEG | EA | 1 |
| SA9022828 | 22"x 8" SIDE ANG. EL 90DEG | EA | 1 |
| SA9024828 | 24"x 8" SIDE ANG. EL 90DEG | EA | 1 |

| Part Number | Description | UOM | Ctn.Qty |
|-------------|--------------------------------|-----|---------|
| PSA90310 | 3 1/4"x 10" SIDE ANG. EL 90DEG | EA | 8 |

HEAD OFFICE

2259 Markham Road, Scarborough
 Ontario, Canada M1B 2W3
 TEL: 416.449.7275 FAX: 416.449.2614