

PLENUM TAKE OFF (28 GAUGE)

APPLICATIONS

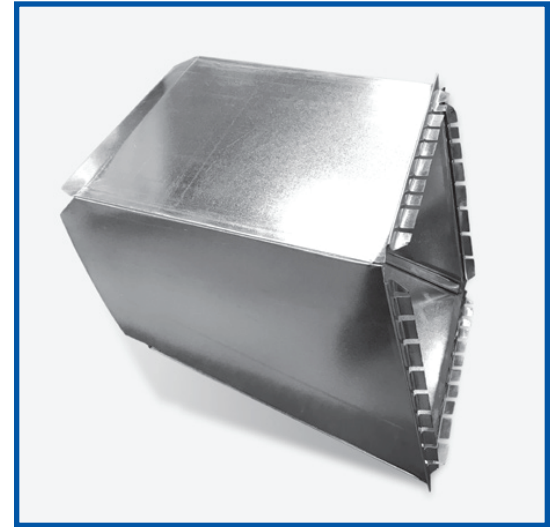
PTO's are manufactured using 28 gauge galvanized steel.

FEATURES AND BENEFITS

Used as a connector from a furnace to ductwork.

STANDARD CONSTRUCTION

- Snaplock design
- Fishlock
- Ships disassembled
- Union made
- Made in Canada



Part Number	Description	UOM	Ctn.Qty
PT03080828	(M) 8"x 8" PTO 3" RISE 12" L	EA	1
PT03081028	(M) 10"x 8" PTO 3" RISE 12" L	EA	1
PT03081228	(M) 12"x 8" PTO 3" RISE 12" L	EA	1
PT03081428	(M) 14"x 8" PTO 3" RISE 12" L	EA	1
PT03081628	(M) 16"x 8" PTO 3" RISE 12" L	EA	1
PT03081828	(M) 18"x 8" PTO 3" RISE 12" L	EA	1
PT03082028	(M) 20"x 8" PTO 3" RISE 12" L	EA	1
PT03082228	(M) 22"x 8" PTO 3" RISE 12" L	EA	1
PT06080828	(M) 8"x 8" PTO 6" RISE 12" L	EA	1
PT06081028	(M) 10"x 8" PTO 6" RISE 12" L	EA	1
PT06081228	(M) 12"x 8" PTO 6" RISE 12" L	EA	1
PT06081428	(M) 14"x 8" PTO 6" RISE 12" L	EA	1
PT06081628	(M) 16"x 8" PTO 6" RISE 12" L	EA	1
PT06081828	(M) 18"x 8" PTO 6" RISE 12" L	EA	1
PT06082028	(M) 20"x 8" PTO 6" RISE 12" L	EA	1
PT06082828	(M) 28"x 8" PTO 6" RISE 12" L	EA	1
PT08142818	(M) 14"x 8" PTO 3" RISE 18" L	EA	1
PT08162818	(M) 16"x 8" PTO 3" RISE 18" L	EA	1
PT08182818	(M) 18"x 8" PTO 3" RISE 18" L	EA	1
PT08242818	(M) 24"x 8" PTO 3" RISE 18" L	EA	1

PLENUM

Part Number	Description	UOM	Ctn.Qty
PL1820 (M)	20"x 18"x 36" H RAW PL	EA	1
AAPL48CAB-A	(M) 13.5"x 19 9/16"x 48" H ARM PL	EA	1
AAPL48CAB-B	(M) 16.5"x 19 9/16"x 48" H ARM PL	EA	1
AAPL48CAB-C	(M) 20.0"x 19 9/16"x 48" H ARM PL	EA	1
AAPL60CAB-B	(M) 16.5"x 19 5/8"x 60" H ARM PL	EA	1
AAPL60CAB-C	(M) 20.0"x 19 5/8"x 60" H ARM PL	EA	1

HEAD OFFICE

2259 Markham Road, Scarborough
 Ontario, Canada M1B 2W3
 TEL: 416.449.7275 FAX: 416.449.2614