

# GENERAL - CHIMNEY LINER

PAGE 1 OF 2

## BASE ELBOW

### DESCRIPTION

Manufactured with 0.025" thick, type 3003 aluminum.

Part Number	Description	UOM	Ctn.Qty
RACL590	(M) 5" AL CHIM LNR 90DEG BASE EL	EA	1
RACL690	(M) 6" AL CHIM LNR 90DEG BASE EL	EA	1
RACL790	(M) 7" AL CHIM LNR 90DEG BASE EL	EA	1
RACL890	(M) 8" AL CHIM LNR 90DEG BASE EL	EA	1
RACL1090	(M) 10" AL CHIM LNR 90DEG BASE EL	EA	1

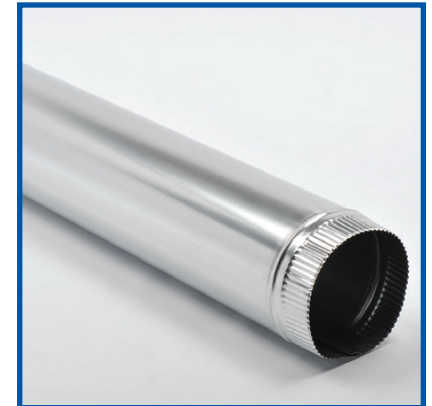


## ALUMINUM PIPE

### DESCRIPTION

Manufactured with 0.025" thick, type 3003 aluminum. Offered only as assembled make up pipe.

Part Number	Description	UOM	Ctn.Qty
RACL460	4" x 5' AL CHIM LNR PIPE	EA	5
RACL560	(M) 5" x 5' AL CHIM LNR PIPE	EA	1
RACL660	(M) 6" x 5' AL CHIM LNR PIPE	EA	1
RACL760	(M) 7" x 5' AL CHIM LNR PIPE	EA	1
RACL860	(M) 8" x 5' AL CHIM LNR PIPE	EA	1

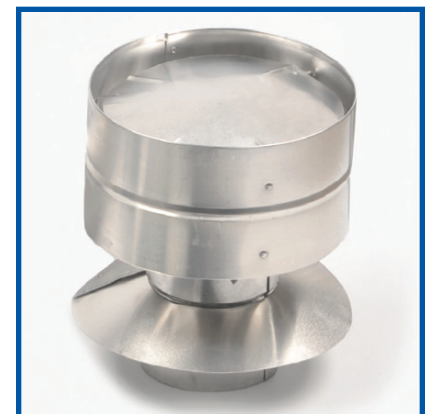


## ALUMINUM RAIN CAP

### DESCRIPTION

Manufactured with 0.016" thick, type 3003 aluminum.

Part Number	Description	UOM	Ctn.Qty
RACL4RC	(M) 4" AL CHIM LNR RAIN CAP	EA	1
RACL5RC	(M) 5" AL CHIM LNR RAIN CAP	EA	1
RACL55RC	(M) 5 1/2" AL CHIM LNR RAIN CAP	EA	1
RACL6RC	(M) 6" AL CHIM LNR RAIN CAP	EA	1
RACL8RC	(M) 8" AL CHIM LNR RAIN CAP	EA	2
RACL10RC	(M) 10" AL CHIM LNR RAIN CAP	EA	1



### HEAD OFFICE

2259 Markham Road, Scarborough

Ontario, Canada M1B 2W3

TEL: 416.449.7275 FAX: 416.449.2614

## GENERAL - CHIMNEY LINER

PAGE 2 OF 2

### STORM COLLAR

#### DESCRIPTION

Made with galvanized steel. Provides added protection against snow and rain.

Part Number	Description	UOM	Ctn.Qty
RACL4SC	(M) 4" AL CHIM LNR STORM CLLR	EA	1
RACL6SC	(M) 6" AL CHIM LNR STORM CLLR	EA	1



### TALL CONE

Part Number	Description	UOM	Ctn.Qty
RACLATCF	(M) 4"- 6" AL CHIM LNR ADJ T/CONE	EA	1

### EXTENSION KIT

Part Number	Description	UOM	Ctn.Qty
FCLK410EX	(M) 4"x 10' FCL KIT EXT	EA	1
FCLK510EX	(M) 5"x 10' FCL KIT EXT	EA	1
FCLK610EX	(M) 6"x 10' FCL KIT EXT	EA	1
FCLK710EX	(M) 7"x 10' FCL KIT EXT	EA	1
FCLK810EX	(M) 8"x 10' FCL KIT EXT	EA	1
FCLK820EX	(M) 8"x 20' FCL KIT EXT	EA	1

#### HEAD OFFICE

2259 Markham Road, Scarborough  
 Ontario, Canada M1B 2W3  
 TEL: 416.449.7275 FAX: 416.449.2614