

ELBOW OVAL 90 DEGREE

DESCRIPTION

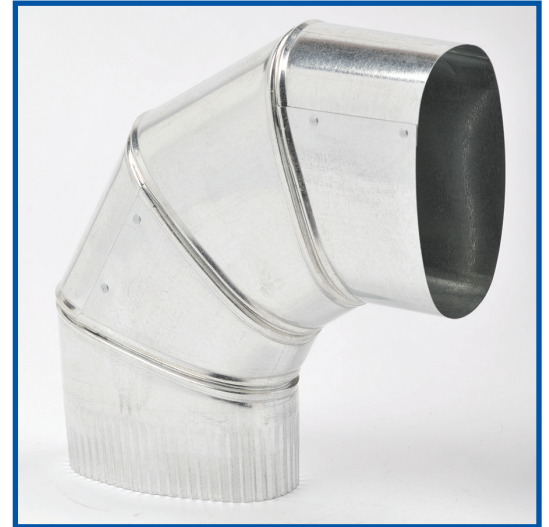
Oval Elbows are available in 90 & 45 degree, flat or vertical configurations and are manufactured from 30 gauge galvanized steel.

APPLICATIONS

This product is designed for indoor use as a connector for matching gauge pipe.

FEATURES AND BENEFITS

- Riveted construction
- Automated assembly ensures consistency
- Minimum 1" crimp
- Union Made



FLAT

Part Number	Description	UOM	Ctn.Qty
OVFL9005	(M) 5" OVAL FLAT 90DEG EL	EA	7
OVFL9006	(M) 6" OVAL FLAT 90DEG EL	EA	12
OVFL9007	(M) 7" OVAL FLAT 90DEG EL	EA	3

VERTICAL

Part Number	Description	UOM	Ctn.Qty
OVVE9005	5" OVAL VERTICAL 90DEG EL	EA	30
OVVE9006	6" OVAL VERTICAL 90DEG EL	EA	18
OVVE9007	(M) 7" OVAL VERTICAL 90DEG EL	EA	5

HEAD OFFICE

2259 Markham Road, Scarborough
 Ontario, Canada M1B 2W3
 TEL: 416.449.7275 FAX: 416.449.2614