

ELBOWS ALUMINUM 90 DEGREE

DESCRIPTION

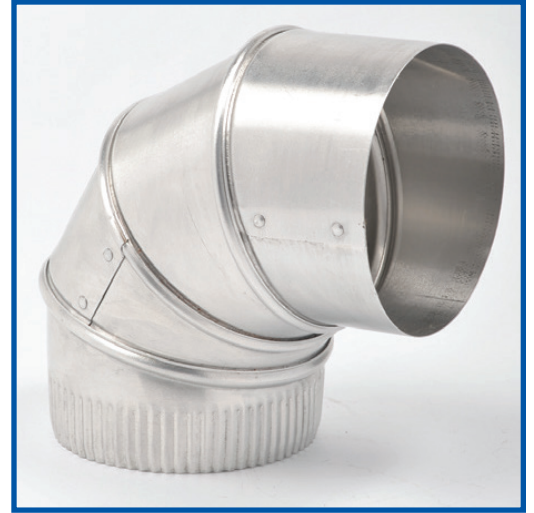
Aluminum Elbows are available in 90 degree configurations and are fully adjustable. Manufactured from aluminum 0.016" and 0.025" thick.

APPLICATIONS

This product is designed for indoor use as a connector for matching gauge pipe.

FEATURES AND BENEFITS

- Riveted Construction
- Minimum 1" crimp
- Union Made



Part Number	Description	UOM	Ctn.Qty
.016" THICK			
ELA90316	(M) 3" 90DEG EL (.016)	EA	1
ELA90416	4" 90DEG EL (.016)	EA	12
ELA90516	5" 90DEG EL (.016)	EA	12
ELA90616	(M) 6" 90DEG EL (.016)	EA	1
.025" THICK			
ELA90325	3" 90DEG EL (.025)	EA	12
ELA90425	4" 90DEG EL (.025)	EA	12
ELA90525	5" 90DEG EL (.025)	EA	12
ELA90625	6" 90DEG EL (.025)	EA	12
ELA90725	(M) 7" 90DEG EL (.025)	EA	1
ELA90825	(M) 8" 90DEG EL (.025)	EA	12
ELA901025	10" 90DEG EL (.025)	EA	8
ELA901225	(M) 12" 90DEG EL (.025)	EA	4
ELA901425	(M) 14" 90DEG EL (.025)	EA	4

HEAD OFFICE

2259 Markham Road, Scarborough
 Ontario, Canada M1B 2W3
 TEL: 416.449.7275 FAX: 416.449.2614