

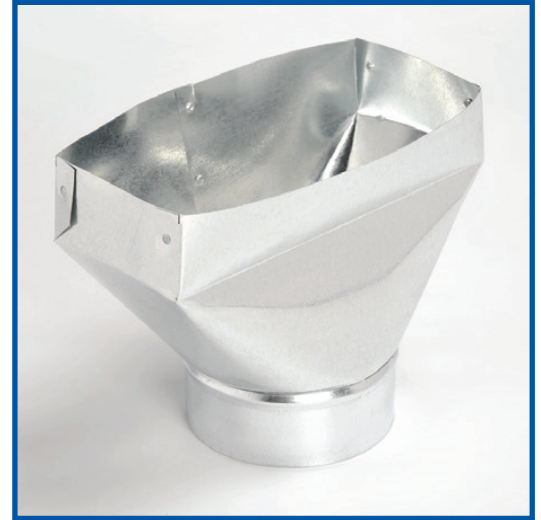
BOOT - UNIVERSAL

DESCRIPTION

Universal Boots are manufactured with standard gauge galvanized steel.

FEATURES AND BENEFITS

- Riveted construction



Part Number	Description	UOM	Ctn. Qty
2 1/4" X 12"			
OUB021205	(M) 2 1/4"x 12"x 5" UNIV BOOT	EA	2
OUB021206	(M) 2 1/4"x 12"x 6" UNIV BOOT	EA	1
3" X 10"			
OUB031004	(M) 3"x 10"x 4" UNIV BOOT	EA	36
OUB031005	3"x 10"x 5" UNIV BOOT	EA	45
OUB031006	3"x 10"x 6" UNIV BOOT	EA	36
3" X 12"			
OUB031206	(M) 3"x 12"x 6" UNIV BOOT	EA	2
OUB031207	(M) 3"x 12"x 7" UNIV BOOT	EA	1
3 1/4" X 10"			
OUB341004	3 1/4"x 10"x 4" UNIV BOOT	EA	18
OUB341005	3 1/4"x 10"x 5" UNIV BOOT	EA	18
OUB341006	3 1/4"x 10"x 6" UNIV BOOT	EA	16
OUB341007	(M) 3 1/4"x 10"x 7" UNIV BOOT	EA	5
OUB341008	(M) 3 1/4"x 10"x 8" UNIV BOOT	EA	4
3 1/4" X 12"			
OUB341204	(M) 3 1/4"x 12"x 4" UNIV BOOT	EA	9
OUB341206	(M) 3 1/4"x 12"x 6" UNIV BOOT	EA	21
3 1/4" X 14"			
OUB341406	(M) 3 1/4"x 14" x 6" UNIV BOOT	EA	1
4" X 10"			
OUB041004	4"x 10"x 4" UNIV BOOT	EA	36
OUB041005	4"x 10"x 5" UNIV BOOT	EA	48
OUB041006	4"x 10"x 6" UNIV BOOT	EA	32
OUB041007	4"x 10"x 7" UNIV BOOT	EA	27
OUB041008	4"x 10"x 8" UNIV BOOT	EA	22

Part Number	Description	UOM	Ctn. Qty
4" X 12"			
OUB041205	(M) 4"x 12"x 5" UNIV BOOT	EA	12
OUB041206	4"x 12"x 6" UNIV BOOT	EA	27
OUB041207	4"x 12"x 7" UNIV BOOT	EA	9
OUB041208	4"x 12"x 8" UNIV BOOT	EA	8
4" X 14"			
OUB041405	(M) 4"x 14"x 5" UNIV BOOT	EA	1
OUB041406	(M) 4"x 14"x 6" UNIV BOOT	EA	6
OUB041407	4"x 14"x 7" UNIV BOOT	EA	8
OUB041408	4"x 14"x 8" UNIV BOOT	EA	7
6" X 10"			
OUB061005	(M) 6"x 10"x 5" UNIV BOOT	EA	3
OUB061006	6"x 10"x 6" UNIV BOOT	EA	24
OUB061007	(M) 6"x 10"x 7" UNIV BOOT	EA	12
OUB061008	6"x 10"x 8" UNIV BOOT	EA	12
6" X 12"			
OUB061205	(M) 6"x 12"x 5" UNIV BOOT	EA	3
OUB061206	6"x 12"x 6" UNIV BOOT	EA	36
OUB061207	6"x 12"x 7" UNIV BOOT	EA	18
OUB061208	6"x 12"x 8" UNIV BOOT	EA	18
6" X 14"			
OUB061406	(M) 6"x 14"x 6" UNIV BOOT	EA	7
OUB061407	(M) 6"x 14"x 7" UNIV BOOT	EA	2
OUB061408	6"x 14"x 8" UNIV BOOT	EA	6

HEAD OFFICE

2259 Markham Road, Scarborough
 Ontario, Canada M1B 2W3
 TEL: 416.449.7275 FAX: 416.449.2614