

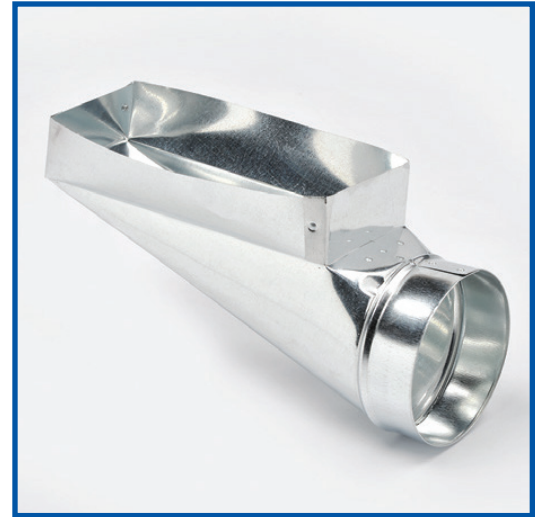
BOOT - END

DESCRIPTION

End Boots are manufactured with standard gauge galvanized steel.

FEATURES AND BENEFITS

- Riveted construction



Part Number	Description	UOM	Ctn. Qty
2 1/4" X10"			
0EB021004	(M) 2 1/4"x 10"x 4" END BOOT	EA	3
2 1/4" X12"			
0EB021204	(M) 2 1/4"x 12"x 4" END BOOT	EA	1
0EB021205	(M) 2 1/4"x 12"x 5" END BOOT	EA	1
2 1/4" X14"			
0EB021406	(M) 2 1/4"x 14"x 6" END BOOT	EA	1
3" X 10"			
0EB031004	3"x 10"x 4" END BOOT	EA	25
0EB031005	3"x 10"x 5" END BOOT	EA	38
0EB031006	3"x 10"x 6" END BOOT	EA	28
3 1/4" X 10"			
0EB341004	(M) 3 1/4"x 10"x 4" END BOOT	EA	22
0EB341005	3 1/4"x 10"x 5" END BOOT	EA	16
0EB341006	(M) 3 1/4"x 10"x 6" END BOOT	EA	12
3 1/4" X 12"			
0EB341204	(M) 3 1/4"x 12"x 4" END BOOT	EA	4
0EB341206	(M) 3 1/4"x 12"x 6" END BOOT	EA	2
4" X 10"			
0EB041004	4"x 10"x 4" END BOOT	EA	40
0EB041005	4"x 10"x 5" END BOOT	EA	36
0EB041006	4"x 10"x 6" END BOOT	EA	24
0EB041007	4"x 10"x 7" END BOOT	EA	24
0EB041008	4"x 10"x 8" END BOOT	EA	5

Part Number	Description	UOM	Ctn. Qty
4" X 12"			
0EB041204	(M) 4"x 12"x 4" END BOOT	EA	3
0EB041205	(M) 4"x 12"x 5" END BOOT	EA	8
0EB041206	4"x 12"x 6" END BOOT	EA	24
0EB041207	4"x 12"x 7" END BOOT	EA	24
0EB041208	(M) 4"x 12"x 8" END BOOT	EA	10
4" X 14"			
0EB041405	(M) 4"x 14"x 5" END BOOT	EA	1
0EB041406	(M) 4"x 14"x 6" END BOOT	EA	14
0EB041407	(M) 4"x 14"x 7" END BOOT	EA	6
0EB041408	(M) 4"x 14"x 8" END BOOT	EA	1
6" X 10"			
0EB061005	(M) 6"x 10"x 5" END BOOT	EA	2
0EB061006	6"x 10"x 6" END BOOT	EA	21
0EB061007	(M) 6"x 10"x 7" END BOOT	EA	5
0EB061008	(M) 6"x 10"x 8" END BOOT	EA	2
6" X 12"			
0EB061206	(M) 6"x 12"x 6" END BOOT	EA	14
0EB061207	6"x 12"x 7" END BOOT	EA	5
0EB061208	(M) 6"x 12"x 8" END BOOT	EA	6
6" X 14"			
0EB061406	6"x 14"x 6" END BOOT	EA	6
0EB061407	(M) 6"x 14"x 7" END BOOT	EA	1
0EB061408	6"x 14"x 8" END BOOT	EA	4

HEAD OFFICE

2259 Markham Road, Scarborough
 Ontario, Canada M1B 2W3
 TEL: 416.449.7275 FAX: 416.449.2614