

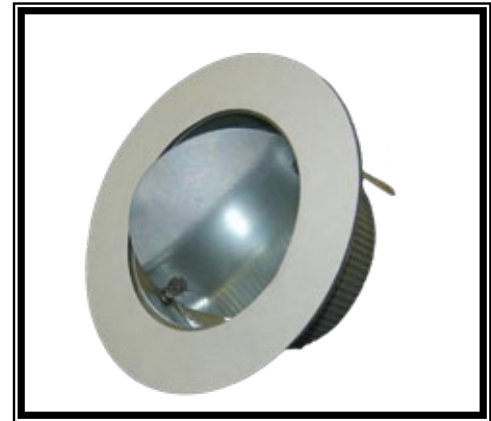
GALVANIZED - LOW PROFILE AIRTIGHT DUCT TAKE OFF PRODUCT DATA

DESCRIPTION

Don Park's airtight, easy install, round duct take off available in various gauges of galvanized steel. With or without damper.

APPLICATION

Take offs are cut into the plenum or rectangular duct and are used to begin pipe trunkline or branchline runs. Side, Top or Bottom Mount.



Features and Benefits:

- Airtight design – includes double side 1/8" thick adhesive gasket on a circular perimeter flange to seal to the duct and special 3M pressure sensitive tape to seal the collar overlap.
- Total height is under 3 1/2"
- Damper is positioned low in the collar to allow it to be positioned so air can be deflected into the takeoff.
- Has a balanced damper assembly.
- Collar is riveted together and then is crimped and beaded.
- Designed so the hole in the duct does not have to be perfect.
- Low profile design for tight spaces.
- Flange has 4 pre-punched screw holes to screw to duct face.
- Saves installation time – cut hole, peel backer off of gasket, orient so damper will direct airflow into the takeoff, stick-on over the hole and then add 4 screws to permanently secure and insure airtight seal on duct face.
- Union Made
- Made in Canada

Dimensions (inches)	Gauge		
	30 (28 gauge mounting flange)	26 (24 gauge mounting flange)	26 (26 gauge mounting flange)
4	•		
5	•		
6	•		
8	•		
10			•
12		•	
14		•	

PRODUCT DATA: